





RESCUER

**HERO
LOCALISATION**

Contact Us



Follow Us

-  @H2020Rescuer
-  @h2020_rescuer
-  @h2020_rescuer
-  @h2020_rescuer

HERO LOCALISATION

SEAMLESS LOCALISATION : Better indoor and outdoor localization of the first responder thanks to a combination of positioning/orientation techniques (visual, inertial, satellite), to be visualized on augmented reality displays (minimap) and on the C2 Interface.

INERTIAL-BASED LOCALIZATION (INERTIO)

- Provision of continuous indoor and outdoor positioning estimates of first responders using the onboard sensors of smartphone carried by FR.
- INERTIO is located entirely on the smartphone, and can potentially be deployed on the smartphone already carried by the first responder.

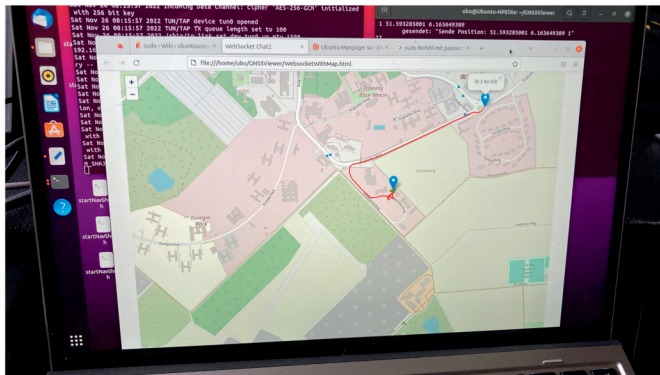
VISUAL-BASED SELF-LOCATION

- Provision of information regarding the position and heading of the first responder using panoramic 360° camera.
- As the module uses visual input, it may be very handy in GPS-denied areas.



GALILEO LOCALIZATION TOOL

- Provision of high precision outdoor positioning estimates of first responders that can be fused with inertial and/or visual indoor localization systems by using a high quality GNSS receiver unit.
- Integration in one box and automatic updates of location to the C2 and the AR displays.



System Overview

